

GB
48

GRAND BANKS

Dependable Diesel Cruisers

www.grandyachts-spain.com®



Luxury and spaciousness are the key words in describing the Grand Banks 48 layout and accommodations. The 11' x 16' fly bridge has seating for as many as 12 people. The master stateroom toilet compartment includes tub and shower as well as generous storage. The galley area contains the freezer, refrigerator, range and oven and more than 12' of counter space.



The richly appointed main saloon measures a full 11' x 19' with full 6'5" headroom. The teak joinerwork and parquet sole are blended with modern decorator fabrics to create a luxurious living/entertaining center. The area contains a complete bar with icemaker, settee and table to accommodate dining for eight.

The photo above shows the saloon looking aft with the bar to starboard and the galley area to port. The main saloon is amidships, separating the guest's staterooms forward from the owner's stateroom aft. The photos to the right show the 14' x 14' owner's stateroom. The top view to starboard shows the full-



length mirror, head entry, desk, oversize 5' x 6'7" double bed and bureau. The bottom photo to port shows the bureau, wraparound shelf with storage under, settee and table and 8' long hanging locker. Next to the hanging locker is a six drawer bureau. This all combines to create the most spacious, elegant stateroom you have ever seen.

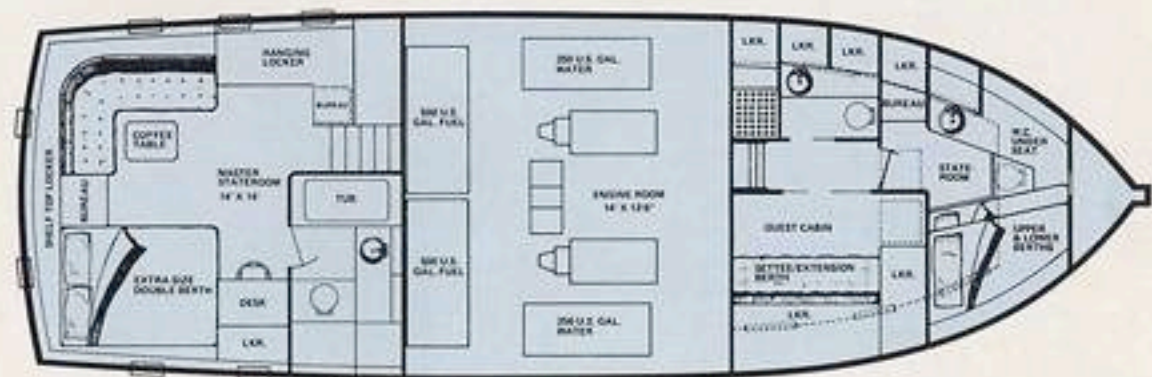
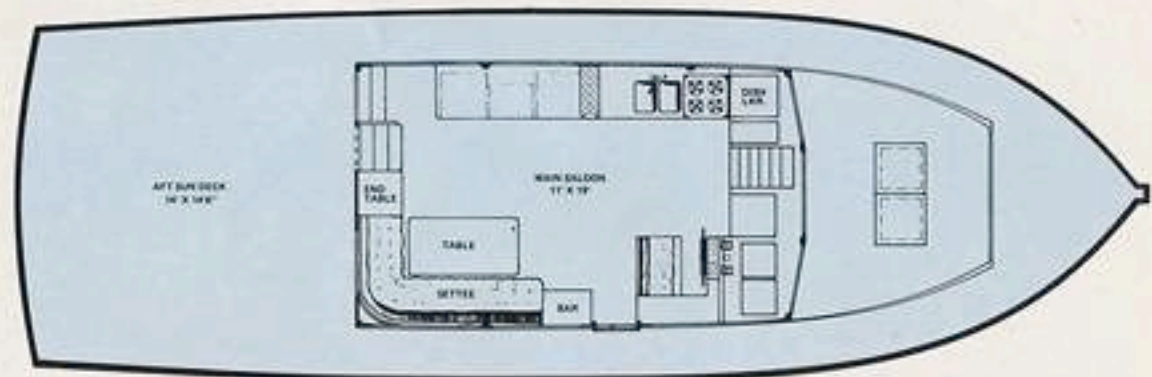
The helm station is to starboard in the main saloon. All instruments and controls are in easy reach with comfortable seating and excellent visibility. Switches for the ship's electrical systems are housed alongside the helm. There is ample space for installation of navigational gear. The smaller photos to the right



above illustrate the generous deck space and work areas aboard the Grand Banks 48. The fore, side and aft decks are all laid teak. An aft deck settee is built-in under the overhang of the fly bridge. The aft deck measures an exceptional 14' x 14'6" and contains two large deck boxes for storage. There is plenty of room for a dinghy, topside

dining or just soaking up the sun. High teak-capped rails enclose the 2'-wide side decks and provide all-around protection. Above is the guest cabin, forward of the main saloon to starboard. This stateroom features a convertible settee which pulls out to create a double berth. Beautiful teak doors slide to each side of the stateroom to make a

double-wide opening to the passageway. As throughout the entire boat, this guest's cabin shows lavish use of teak, fine materials and excellent storage space. The engine room is amidships below the main saloon and measures 14' x 13'6" with standing headroom. It's big enough to add a workbench and all the extras you could possibly require.



**GB
48**



The forward cabin is specifically designed to be entirely self-contained with accommodations for two. The cabin is complete with washbasin and head, and alternate private entry from the foredeck. This makes it an excellent crew's quarters or extra guest cabin. The forward toilet compartment is complete with shower, washbasin and head.

SAFETY FEATURES

No compromises were made in the selection or design of the safety features included in the Grand Banks 48. These features include dependable mechanical steering with emergency steering capability, automatic alarms for engine oil pressure and water temperature, circuit breakers protecting all electric circuits, seacocks on all thru-hull fittings below the waterline, and four bilge pumps.

In addition, life rails and grab rails are provided all around the cabin and fly bridge, escape hatches are fitted for each below decks compartment, and three-ply safety glass is used throughout.

The engine room is ventilated by four electric blowers, the bilge is protected from engine oil by stainless steel drip pans, each fuel tank is fitted with a diaphragm type shutoff valve and a master fuel shutoff valve is also provided.

SPECIFICATIONS

LOA	48'6"	(14.8 metres)
LWL	46'1"	(14.0 metres)
Beam	15'5"	(4.7 metres)
Draft	4'6"	(1.4 metres)
Displacement	49,550 lbs.	(22,475 kg)
Water	500 gal. (U.S.)	(1893 litres)
Fuel	1000 gal. (U.S.)	(3785 litres)

www.grandyachts-spain.com ©



GRAND BANKS

Dependable Diesel Cruisers



GRAND BANKS 48 EQUIPMENT LIST

Mechanical

- Engines equipped with heat exchangers for fresh water-cooling - Stainless steel drip pan below each engine - Engines silenced with high position, pot type, water-cooled mufflers venting through transom - All underwater gear, i.e. rudders, shafts, stuffing boxes, fittings, struts, etc. are bronze - Deck filled diesel fuel tanks are welded black iron, with hand hole clean-out plates - Sight gauges on fuel tanks - Deck filled stainless steel fresh water tanks with baffles and hand hole clean-out plates - All fuel tanks fitted with individual shutoff valves - Deck filler caps marked with U.S. gallonage - Engines fitted with fuel filters and water separators - Aluminum plate engine room soles - Morse clutch and throttle controls - Sea cocks on all thru-hull fittings at or below waterline - Limber lines - Manual bilge pump - Mechanical steering with chain and stainless steel cable to bronze quadrants - Bronze rudder stocks and stuffing boxes - Emergency tiller steering with deck plate access - Acoustic insulation on engine room bulkheads - Manifold valve panel in engine room for tank selection -

Electrical

- Electric horn - Three windshield wipers - Three automatic electric bilge pumps - Two 5" A.C. and two 4" D.C. engine room exhaust blowers - 110 volt shore power circuit throughout with circuit breakers - Two heavy duty 195 amp. hr. batteries, paralleled for starting - One heavy duty 195 amp. hr. service battery - Fibreglass battery boxes and covers - 12 volt lighting - Pressure water system - Two shower sump pumps - Engine oil pressure and water temperature alarms - Galley vent blower - Polarity indicator - Head vent blowers - Battery disconnect switches - Service selection of batteries through three position vapor proof master switch - All electric circuits through circuit breakers - Alternators on engines - Voltage regulators - Built-in stereo tape player with speakers in saloon and owner's cabin - Windshield wash down - Copper bonding throughout - International rule navigation lights -

Exterior

- Anchor bowsprit and pulpit - Laid teak decks - Teak burgee and ensign staffs - Closed chocks and mooring cleats forward and midships, open chocks and mooring cleats aft - Teak handrails around cabin sides - Swim platform with boarding steps - Teak exterior trim - Ladder to fly bridge - Stainless steel rail around fly bridge - Mast with stainless steel wire rigging and dacron boom topping lift tackle - Deck hatches teak framed with perspex tops - Bronze stem band - Bronze chafing strips on rub rails - Fly bridge with cushions, perspex windscreen, engine controls, instruments and steering - Two aft deck settees, with storage under - Bronze stanchions with teak rails on side decks - Teak transom and bulwark cap rails - Teak aft rail with hinged gate to swim platform - Commercial type mast and boom - Aft deck fully scuppered - Hinged boarding gates, port and starboard - Yacht name and hailing port plaques for transom - Navigational side lights with yacht name plaques on each side of fly bridge -

Specifications subject to change without notice.

transom and bulwark cap rails - Teak aft rail with hinged gate to swim platform - Commercial type mast and boom - Aft deck fully scuppered - Hinged boarding gates, port and starboard - Yacht name and hailing port plaques for transom - Navigational side lights with yacht name plaques on each side of fly bridge -

Interior

- Teak interior trim and paneling - Teak parquet on all cabin soles - 6" foam mattresses - 4" foam cushions - Teak furniture - All interior teak is Golden Burmese with satin finish varnish - 30" eight spoke steering wheel - Private enclosed toilet compartments with heads, basins, and showers - All windows three-ply safety glass - Sliding and opening windows and ports throughout - Cabin headliners of acoustical vinyl - Teak cabinets, drawers and hanging lockers throughout - Helmsman's seat - Helmsman's station equipped with full instrumentation, including water temperature and oil pressure gauges, engine hour meters, ammeters, and tachometers - Trash bin in galley opens on side deck for disposal - Teak "L" shaped settee - Galley range with oven - Teak dish locker and glass rack - Teak bar with bottle and glass rack - Stainless steel double galley sink - Teak valances in main cabin and owner's cabin - Teak grab rail in main cabin overhead - Teak "hi-lo" table - Center opening windshield - Chain locker - Insulated icebox under settee - Teak medicine cabinets - Full-length wall mirror in owner's stateroom - Mirrors in all heads - Bathtub/shower in owner's cabin -



The Grand Banks 48 shown in this brochure is the *IN PURSUIT* owned by Jim Ferber of Los Angeles.

AMERICAN MARINE, LTD.

"KNOWN THROUGHOUT THE WORLD FOR QUALITY CRAFTSMANSHIP"

San Diego, California 92627

www.grandyachts-spain.com